

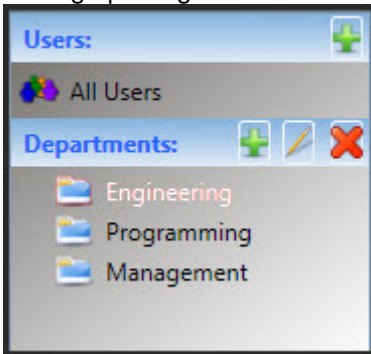
Key Features

Datapage+ 4.0 provides you with the following key capabilities:

- Registered Users - User registration and subsequent login and password validation help to protect the database from unauthorized edits.

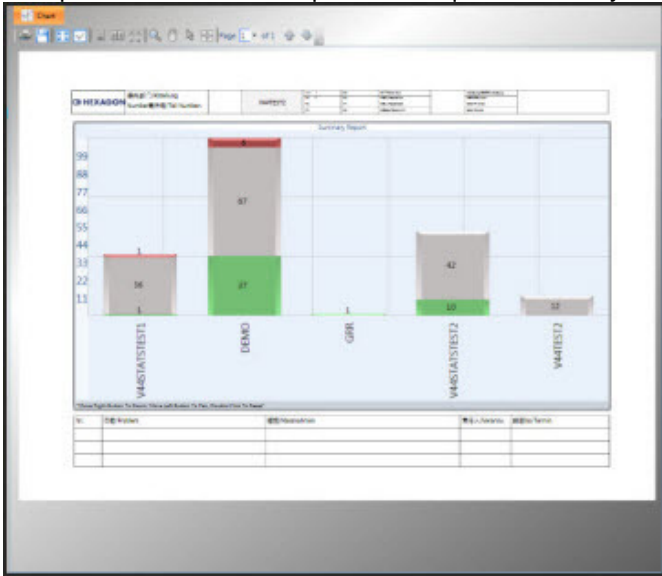


- Account Management - Those with administrator access can organize user accounts and manage privileges for all accounts registered with the database.

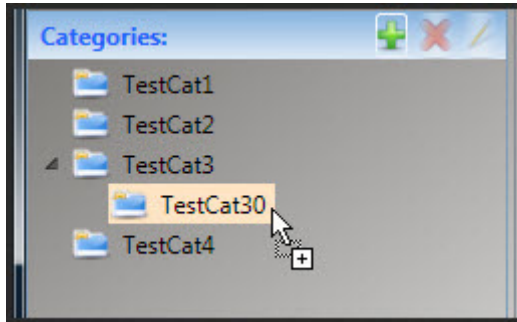


User Name	Priority	Access	Email Address	Last Access	Register Time
Demo	Blue	ReportViewing		9/30/2009 4:02:16 PM	5/11/2009 5:16:57 PM
zehong	Green	FullAccess		9/2/2009 5:41:06 PM	9/1/2009 4:39:06 PM
Jared	Red	Administrator		9/30/2009 3:29:29 PM	9/30/2009 3:28:28 PM
Susan	Grey	WaitingforApproval	sue@janedoe.com	Unknown	9/30/2009 4:17:03 PM

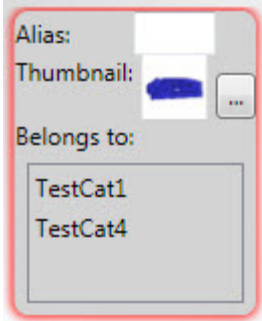
- Multiple Part Views - This provides a quick summary of the status of one or more selected parts.



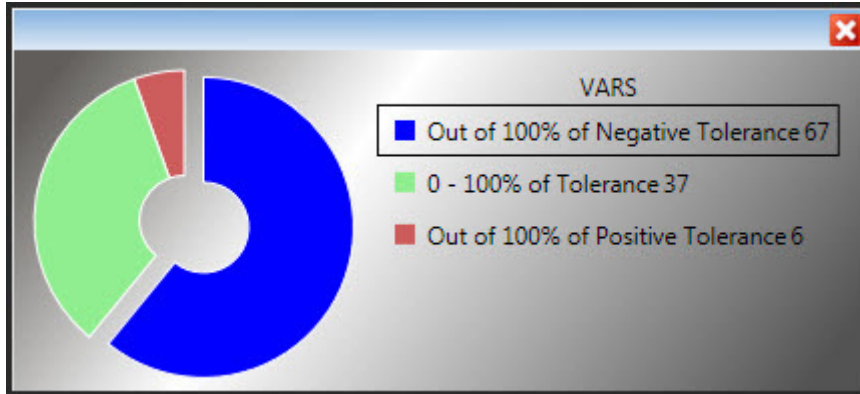
- Categories - You can easily organize parts by assigning them to one or more categories or subcategories. Clicking on a category then filters all the parts in the database, only showing the parts assigned to that category.



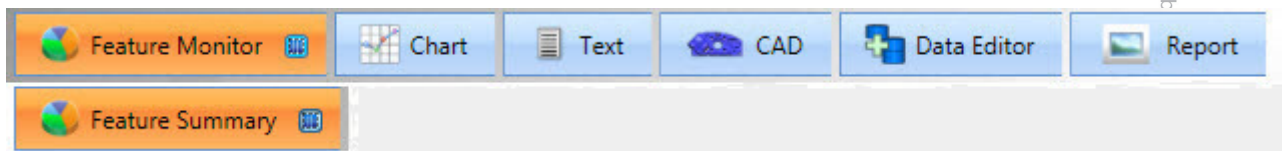
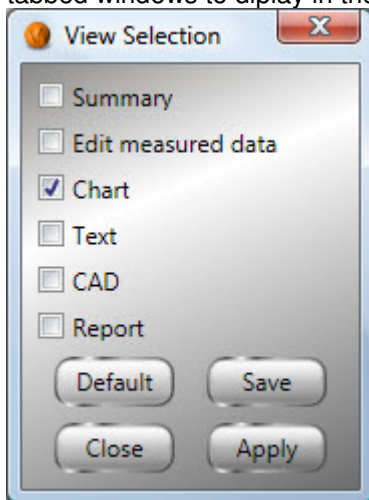
- Part Aliases and thumbnails - You can supply part aliases or image thumbnails to make specific parts more easily recognizable in the database.



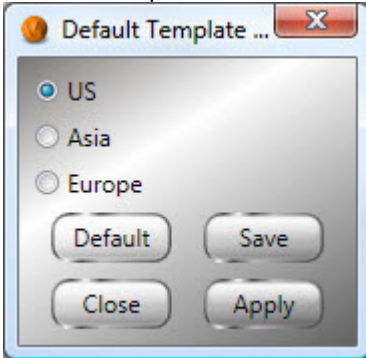
- Pie Chart - This lets you view the state of all the features in the part in the form of a pie chart graph with the colored slices representing the different tolerance and out of tolerance zones for the features in the tab.



- Customizing the Main View - Using the **View Selection** dialog box you can choose what tabbed windows to display in the main view.



- Default Template Set - Predesigned paper sizes for reports are based on selected locales.



- Import 3D CAD Models - Supported CAD model file types are .cad, .igs, .iges, and .xamlsolid
- Supported Charts - Datageo+ supports the following chart types: Run, Individual, Subgroup, Histogram, Cumulative Probability, ATT Test, Target Individual, Target Group, Pareto Variable, Pareto 6 Sigma, Bar Whisker, Multi, Multi Run, and Process.



- Excel/CSV Reports - Datapage+ lets you output you report into Excel as any of these types (Data, Variable, ISIR, Spreadsheet).

	A	B	C	D	E	F	G	H	I	J	K
1											
2	Wilcox Variable Alias Report: 7/30/2009 4:59:23 PM										
3	Part:	DEMO									
4											
5											
6		T93-04-11-	T93-04-11-	T93-04-11-	T93-04-11-	T93-04-12-	T93-04-12-	T93-04-12-	T93-04-12-	T93-04-12-	T93-04-12-
7	CIR0.D	2.001	2.002	2.002	2.001	2.001	2.002	2.001	2.001	2.002	2.002
8	CIR0.M										
9	CIR0.T	0.009	0.009	0.01	0.008	0.009	0.007	0.01	0.009	0.011	0.009
10	CIR0.X	0.004	0.004	0.005	0.004	0.004	0.003	0.005	0.004	0.005	0.004
11	CIR0.Y	1.002	1.002	1.002	1.002	1.002	1.002	1.002	1.002	1.002	1.002
12	CIR1.D	0.999	0.999	0.999	0.999	0.999	0.999	0.999	0.999	0.999	0.999
13	CIR1.D	0.591									
14	CIR1.M										
15	CIR1.T	0.012	0.011	0.012	0.012	0.012	0.012	0.011	0.012	0.011	0.011
16	CIR1.X	3.553	3.552	3.553	3.553	3.553	3.553	3.552	3.553	3.553	3.553
17	CIR1.X	3.68									
18	CIR1.Y	0.005	0.005	0.005	0.005	0.005	0.005	0.005	0.005	0.005	0.005
19	CIR1.Y	3.169									
20	CIR2.D	0.999	1	0.999	1	0.999	1	1	0.999	1	1
21	CIR2.D	0.591									
22	CIR2.M										
23	CIR2.T	0.012	0.011	0.013	0.013	0.013	0.011	0.013	0.011	0.011	0.012
24	CIR2.X	-3.445	-3.445	-3.444	-3.444	-3.444	-3.446	-3.444	-3.445	-3.445	-3.445
25	CIR2.X	6.081									
26	CIR2.Y	0.003	0.003	0.003	0.003	0.003	0.003	0.003	0.003	0.003	0.004
27	CIR2.Y	3.168									
28	CIR3.D	0.998	0.999	0.998	0.997	0.998	0.998	0.998	0.998	0.999	0.998
29	CIR3.D	0.591									
30	CIR3.M										
31	CIR3.T	0.006	0.006	0.006	0.007	0.007	0.007	0.007	0.007	0.006	0.006

First Article Inspection Report (首件檢查報告)

Part Number (料號): [] Tool # (檢治具): [] Inspector (檢查者): [] Submission Date (日期): 12/20/2009

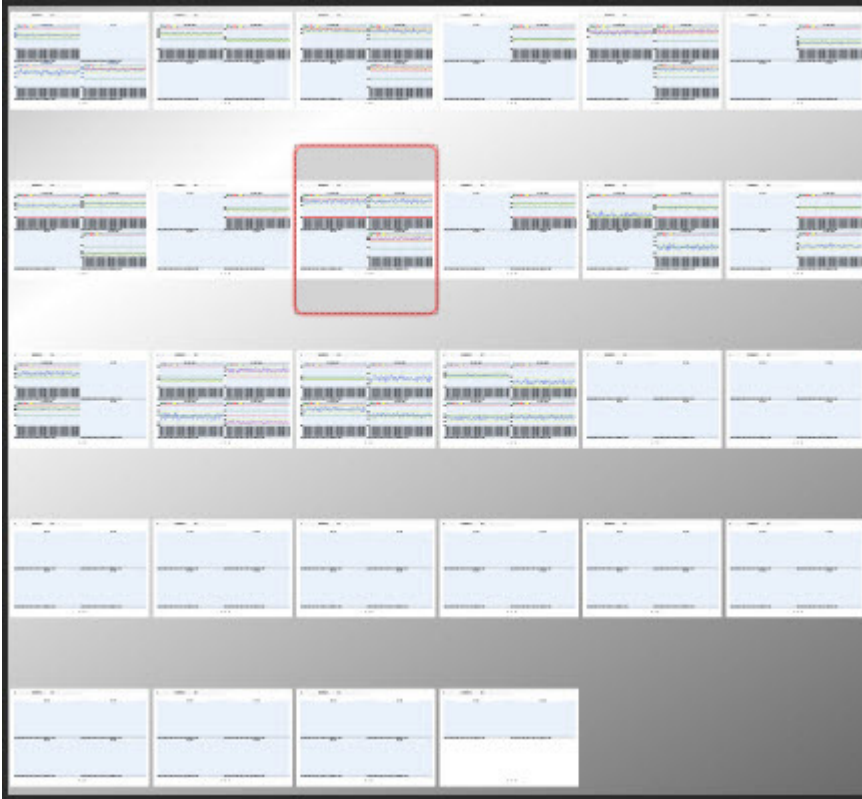
Part Revision (版本): [] Entry # (充數): [] Customer / Supplier (客戶/供應商): []

Part Description (品名): [] Tool vendor (檢治具廠商): [] Source (樣品來源): 自製 客戶送料

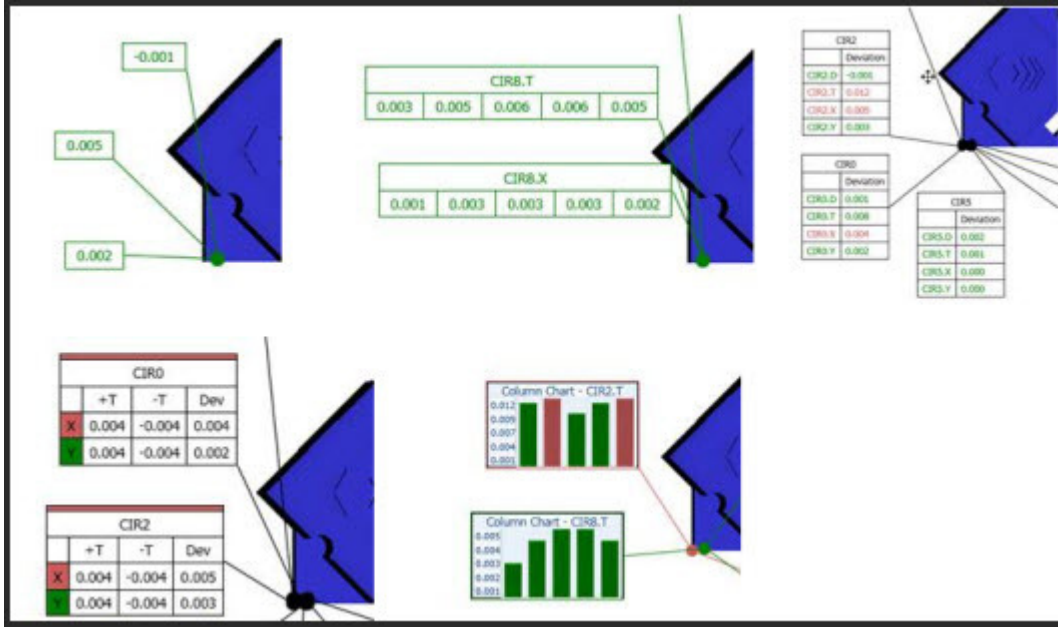
報告用途: 零件評估 檢治具評估 客戶送樣 其他:

DRAWING SPECIFICATIONS (圖面規格)				INSPECTION RESULTS (結果)											INSPECTION ANALYSIS (分析)						
ITEM	LOCATION	CTF	Inspection Method	NOMINAL	+TOL	-TOL	Sample (樣品)					Deviation from Nominal					Mean	% Tolerance			Acc/Reg
順序	圖紙位置	量規尺寸	檢查方法	標稱值	(取正值)	(取正值)	#1	#2	#3	#4	#5	#1	#2	#3	#4	#5		UPPER	LOWER	HIGH	LOW
1	CIR3.D			0.000	0.005	-0.005	0.998	0.998	0.999	0.997	0.998	0.998	0.998	0.998	0.997	0.998	0.998	1000%	0%	Pass	
2	CIR3.T			0.000	0.012	-0.012	0.006	0.006	0.007	0.006	0.006	0.006	0.006	0.006	0.007	0.006	0.006	8%	0%	Alert	
3	CIR3.Y			0.000	0.004	-0.004	-3.445	-3.445	-3.445	-3.445	-3.445	-3.445	-3.445	-3.445	-3.445	-3.445	-3.445	0%	802%		

- Report tab lets you view, combine, and order report pages.



- The CAD report supports several available label types.



- Define Rotation Center
- Change CAD Color and CAD Window BackGround
- Tool to Move Data to Database
- Sheetmetal Axis Label Shows Direction of Deviation
- Color ball for leaderline
- Color Map

System Requirements

- 1 GHz or faster 32-bit (x86) or 64-bit (x64) processor
- 1 GB RAM (32-bit) / 2 GB RAM (64-bit)
- 8 GB available disk space (32-bit) / 12 GB (64-bit)
- Optical DVD drive

Additional requirement for DataView+ module:

- DirectX 9 graphics processor



Canadian Measurement-Metrology Inc.

• Measurement & Inspection • New & Used Equipment • Calibration & Repairs • Upgrades & Retrofits • Training • World Class Product Solutions • Integration • Upgrades and retrofits

